



NFATc2IP Polyclonal Antibody

Catalog No	YP-Ab-01897
Isotype	IgG
Reactivity	Human;Rat;Mouse;;Fish
Applications	WB;IHC
Gene Name	NFATC2IP
Protein Name	NFATC2-interacting protein
Immunogen	The antiserum was produced against synthesized peptide derived from human NFATC2IP. AA range:151-200
Specificity	NFATc2IP Polyclonal Antibody detects endogenous levels of NFATc2IP protein.
Formulation	Liquid in PBS containing 50% glycerol, 0.5% BSA and 0.02% sodium azide.
Source	Polyclonal, Rabbit,IgG
Purification	The antibody was affinity-purified from rabbit antiserum by affinity-chromatography using epitope-specific immunogen.
Dilution	WB 1:500-2000;IHC-p 1:50-300
Concentration	1 mg/ml
Purity	≥90%
Storage Stability	-20°C/1 year
Synonyms	NFATC2IP; NIP45; NFATC2-interacting protein; 45 kDa NF-AT-interacting protein; 45 kDa NFAT-interacting protein; Nuclear factor of activated T-cells; cytoplasmic 2-interacting protein
Observed Band	48kD
Cell Pathway	Nucleus . Cytoplasm . TRAF1 is associated with a fraction of NFATC2IP in the cytoplasm and prevents its translocation to the nucleus. .
Tissue Specificity	Brain,Epithelium,Eye,Liver,
Function	function:Plays a role in the inducible expression of cytokine genes in T-cells, especially by increasing NFAT-driven IL-4 production.,PTM:Methylation at the N-terminus by PRMT1 modulates interaction with the NFAT complex and results in augmented cytokine production.,similarity:Contains 1 ubiquitin-like domain.,subcellular location:TRAF1 is associated with a fraction of NFATC2IP in the cytoplasm and prevents its translocation to the nucleus.,subunit:Interacts with NFATC2, TRAF1, TRAF2 and PRMT1.,
Background	function:Plays a role in the inducible expression of cytokine genes in T-cells, especially by increasing NFAT-driven IL-4 production.,PTM:Methylation at the N-terminus by PRMT1 modulates interaction with the NFAT complex and results in augmented cytokine production.,similarity:Contains 1 ubiquitin-like domain.,subcellular location:TRAF1 is associated with a fraction of NFATC2IP in



the cytoplasm and prevents its translocation to the nucleus.,subunit:Interacts with NFATC2, TRAF1, TRAF2 and PRMT1.,

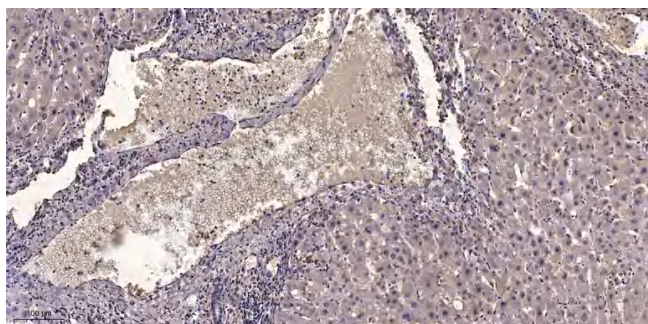
matters needing attention

Avoid repeated freezing and thawing!

Usage suggestions

This product can be used in immunological reaction related experiments. For more information, please consult technical personnel.

Products Images



Immunohistochemical analysis of paraffin-embedded human liver cancer. 1, Antibody was diluted at 1:200(4° overnight). 2, Tris-EDTA,pH9.0 was used for antigen retrieval. 3,Secondary antibody was diluted at 1:200(room temperature, 45min).